

# BB472 Mary Ann Boat Build

Custom Built with Extras and Embellishments

By Denis Wenzel  
Manchester, NH U.S.A.

Completed January, 2012



# Note from Billing Boats USA

Denis Wenzel builds boats with uncompromising expertise and he is a very skilled model boat builder. But, what makes Denis' builds so special is the imaginative embellishments and add-ons that he so expertly and meticulously does. They add even more character and charm to his builds. It is not “kit bashing”, but rather it is a build style that personalizes and provides rich detail that enhance and modify, but does not change, the original character of the boat. We also used his original text whenever we could as it is much more enjoyable to read than anything we could write.

I hope you enjoy this building log as much as we do. However, this is an abbreviated version. For more detail, see his entire building log at: <http://maryanndrydock.wordpress.com>

# Getting Started:



- \* The first thing to do is put the keel assembly together.



- \* Everything was laid out and ready.....so, the build began. Using my carpenter's square, the ribs were assembled onto the keel. According to the plans, pre-measured pieces of wood was cemented in between the ribs, spacing them out and locking them into position.

# Ribs and Deck Installation:



- \* Once the deck beams were cemented into place, I then prepared the deck halves for the deck Joice installations, both right and left. I gave this some thought, and rather than to wait on cementing the deck halves in place at a later time, I decided to do this during this step, combining the two. Before I put them in place, I placed {but did not cement} the singular deck Joice between ribs #1 and #2. this would be cemented in later, along with the joices. Doing this in this manner, will insure that the ribs are in the correct alignment with the deck. The joices were then inserted by sliding them in from the stern and then cemented in place. While the glue was still wet, the deck was nailed down with 7mm brads to hold the assembly flush.

- \* You may note the brads in the deck surface. I like to pull them out later, after it is dry.....they are not needed anymore and it will insure that the deck planking will be flat, with no bumps. This was set aside to dry thoroughly before the next step..... fairing and hull planking.

\* .

# Fairing the Hull:



- \* It was time to fair the hull frame. I have a couple different size sanding blocks to accomplish this. For a little added fun, I set up a chair in the doorway of the garage.....brought everything out there, along with a couple beers....and brought Gibbs {my 'lil buddy} out there with me to keep me company. It took a bit of time to do this, but soon it all looked quite uniform. I paid special attention to the stern, it had to be shaped just right for the planks to make that sort of bend. Planks need to sit squarely on the ribs.



- \* The hull planking begins with the bulwark walls. Starting at the bow, the pair was cemented into place. Be sure to test fit the parts to be sure that they fit the contour correctly.



# Bulwark Assembly:

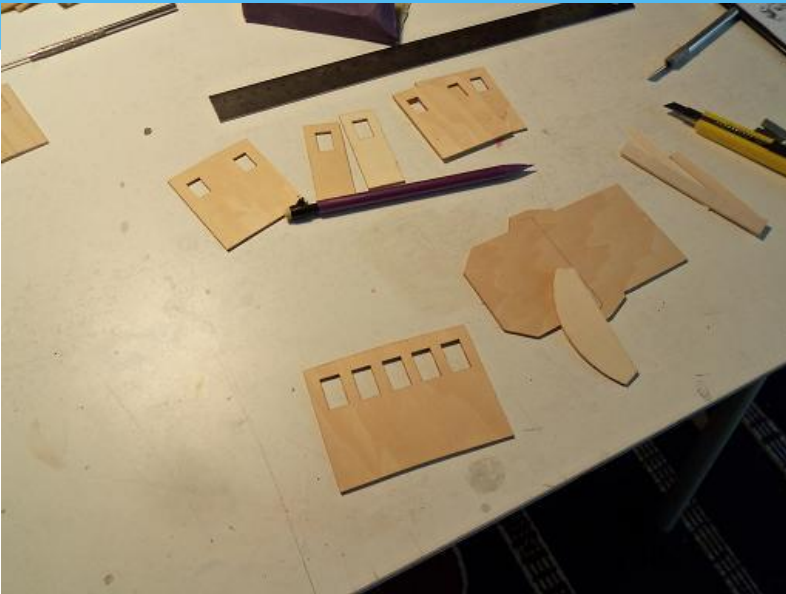


- \* Here is what I did for the uneven mating problem with the bow and mid-ship bulwarks. I took some of the same material and made a pair of tapered wedges to make them more in-line with each other.



- \* Once all the bulwarks are cemented into place, set the assembly aside for it to dry completely, before starting the hull planking. At a later time, the top of the bulwarks can be sanded level and flush with the post, for when it is time to install the top rails.

# Some Cabin Assembly:

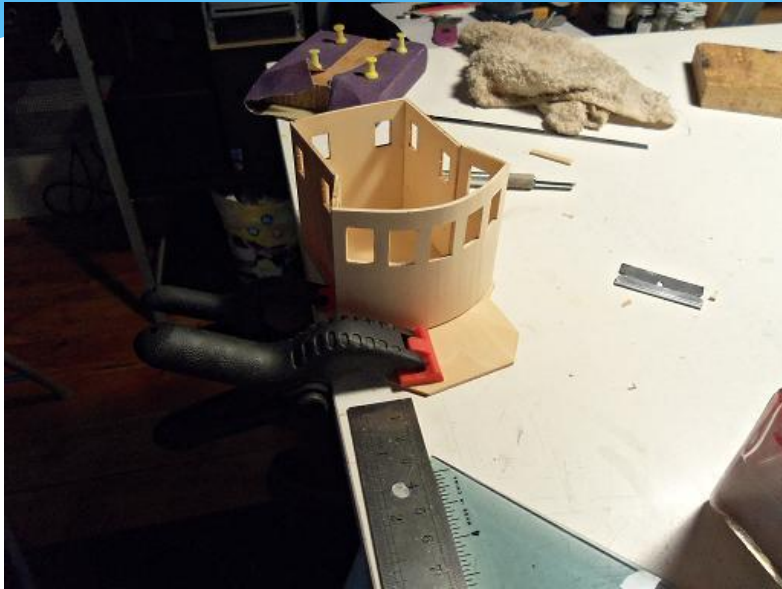


- \* While the bulwarks were drying, I thought I would deviate a bit and start the structures for the deck. I like to embed the structures into the deck planking, eliminating the looks of separation lines that can be sometimes seen between structures and planking. I was very interested in the pilot house and it's odd shape. In setting up for it, I cut out all the parts involved.



- \* The face of the pilot house needs to make a significant bend here. I found the face to be made of a very stiff plywood, making this bend quite hard to do. I will replicate the part using a softer, more flexible material. I have some basswood 1/16" x 4" 24". Checking this out, I found it to be perfect for the job.  
..gotta love that jig... AK-k-k-k-k-k!!!

# Starting to Plank:



- \* At this point, I figured that I would set this aside as well and allow it to dry completely. Now I can go back to the hull and start the hull planking.



- \* Planking the hull was the next step in the assembly. The first couple rows of planking was straight forward, not too much to worry about.



# Planking the Sides:



- \* As the planking progressed, I noticed that the bow was coming out rather well. The stern however, was taking on the opposite results. Rather than rip boards up and waste them, I decided to simply repair the bad spots and follow it up later with filler, sanding and shaping it to the desired shape.



- \* After the keel rabbits were cemented into place, I had to end the session a bit early. Supper needed to be made, followed by a romp in the field with my best friend Gibbs. I had to wait till the rabbits dried anyway. AHOY!!!

# Planking the Sides:



\* Shown is a low-budget way of bending planks, the critical part of this ship is the stern. Soaking the planks in water {I used cold and let them set for a while} is a good thing to do for this kit to acquire the flex they need. Some folks prefer to let the planks dry before using them, but I use them damp {wipe off residual moisture}...I feel it aides in contour and shape. the drying planks after they have been cemented into place, draws the white glue into the wood, further bolstering the adhesion. ....on with the planking.



\* From the keel, I continued the planking, until there were only “trimmed” planks left to do. I used the rest of the excess planking, left over from the whole planks until the gaps were completely closed.

# Finishing the Hull:



\*Soon, it was finished. I added some filler to a few of the more noticeable gaps. By the time I do the first sanding, it should be completely dry. Later, it will get a thin coat of filler, to be sanded yet again, in an effort to fill in all the cracks in the hull. First sanding will be a rough sanding, followed with a go-over with finer paper. It will be nice to feel a smooth hull.



\* The sanding was an extensive task. At different points, I took rests, time to drink a beer and reflect on the progress.



# Priming & Adding a Deck:



\*After the sanding was finished, the hull was given a primer coat. I find this to be a good way to see any defects and abnormalities. There were a few cracks where the glue didn't seal between the planks <but> these were all minor.....and I was quite happy with the results.



\* Then, an idea came about redesigning the aft deck.....I liked it.....it's going to add so much to the build! The first thing to note was the shape of the deck. To do what I wanted to do, it needs to be a bit bigger, so I will extend it to the 9th pair of posts....not too much. I will raise it to the top of the posts and add a wall in the front



# Aft Deck & Scuppers:

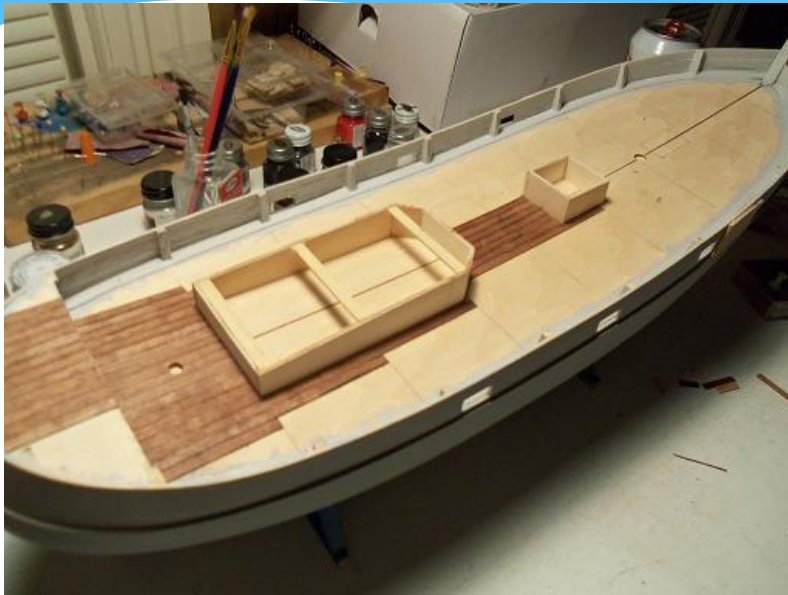


- \* I played around with it for a bit..... fitting <not gluing> the pilot house on the deck to see what kind of room there was to play with. I may elect to move the pilot house forward a little. The most I could do anyway, is about a quarter of an inch.



- \* I cut out the scuppers, 3 on each side.

# Planking the Deck:



\* The deck planking on the Mary Ann is started, boxing in the pilot house platform. (Note: Pilot house platform placed and not glued yet.)



\* I used small strips of planking to space the leading rows. Black crayon outlines the outer edges of the planks to simulate caulking. Excess is scraped off the top surface and assembled into a pile on the table, along with sanding dust from sizing the planks. It is mixed together and used to fill in any small gaps in the deck.

# Planking the Deck Continued:



\* I try not to waste anything.....even cast-off wood has a use somewhere. The planking continued.....



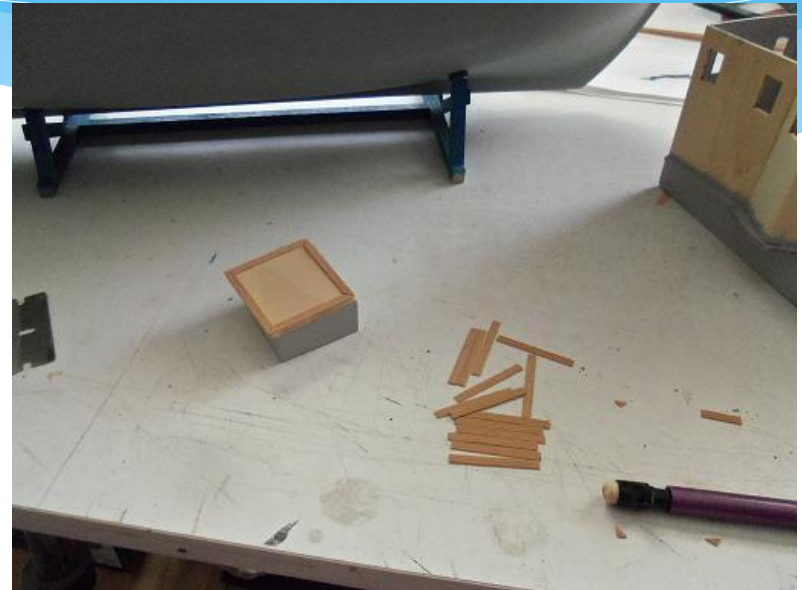
\* The main rails {or 'cap' rails} were cemented into place. Since there were two of them....I used them both. I perhaps should have trimmed 1/8th of an inch off the starboard side cap rail, but it looks fine the way it is. They will be sanded and contoured later, before I paint them. The center rail boards need to be installed still, and will do all this at that step.



# Placement of Deck Structures:



\* It (the deck) was then given the second coat (of lacquer)..when that was dry, the structures were set on it for a dry fitting to see how it would look.



\* I decided that I would <do> the structures.  
(Deck structures that give the build so much character)



# Deck Structures Detail:



\* Building the wheelhouse with customary customization and detail

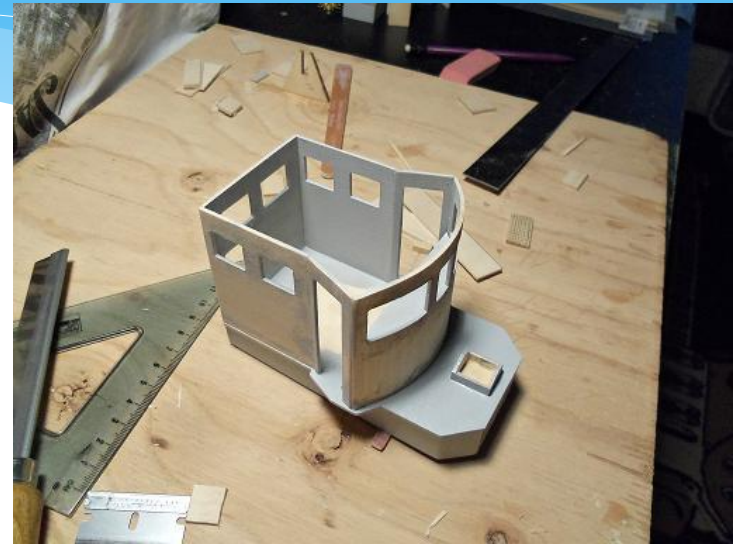


\* This adds a lot to the deck.....but I am also thinking about the winch and crane set-up that the Nordkap has, and I'm wondering how it would look on the Mary Ann. I have the pulleys and everything I need to do it. Then my thoughts carried further.....a boom and a net.....oh, oh, I'm starting to think too much again!!! That's the beauty of these Billing's kits.....there is so much you can do to these kits, that is, as long as you don't get too far away from the intended subject. This is right up my alley.....because, I'm always thinking.

# Wheelhouse Makeover:



- \* I began to think again of an earlier idea I had, retooling the whole pilot house, with larger windows and embellished doorways. The more I thought about it, the more bolstered I became. Soon, I couldn't stand it any more.....and I took another look at the plans. The back door, wasn't a doorway at all.....it's a utility locker. I would have to make the interior walls to case this in. Fine!!! .....I'll do it!



- \* I couldn't believe how much this little renovation changed things! I couldn't wait to see how this would look on the deck.....I set it up!

# Getting Some Paint on It:



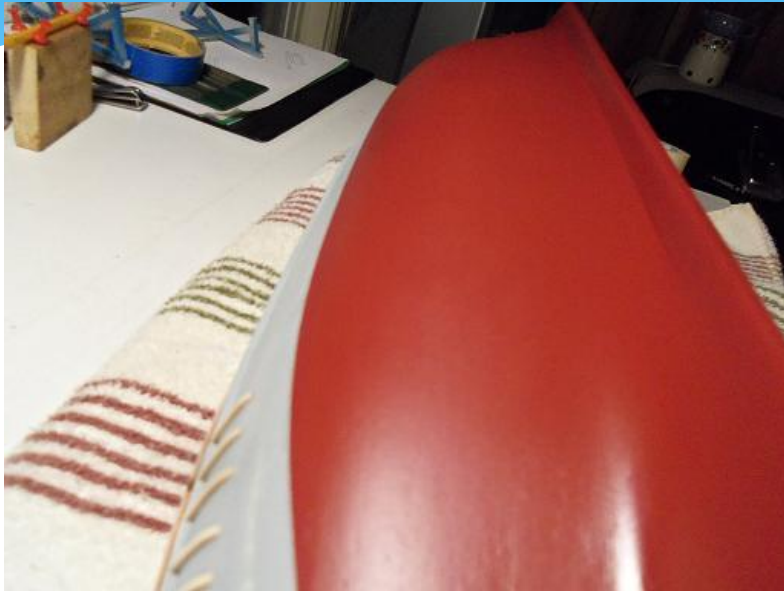
- \* The rub rails were installed, sanded and cleaned up. The scupper covers were installed.



- \* I am going to paint the bottom first... makes masking easier. The Billing's paint ran very well through the airbrush! I did thin it down a bit, even though the paint looks quite watery. The coverage is very good.....no splatter, no sputter.....except when you begin to run out! I have to use a 1/4 oz bottle with this airbrush, so it does empty out quickly. I went through almost the entire 1/2 oz bottle of Hull Red. I gave it two coats.



# A Painted Hull:



- \* These next couple pictures will give you a good look at the finish this paint delivers. It's very smooth and even.



- \* So, the Mary Ann has now taken a giant leap forward. Once the hull has been touched up, the structures can be cemented into place.....another giant leap



# Progress Thus Far:



- \* The deck structures on the newly painted hull/deck look pretty good.



- \* The prop and the rudder was installed next. I don't have to do anything around the rudder stem, so why not?

# Customized Wheelhouse:



- \* Mahogany Sided
- \* Storage Locker Installed
- \* Made large windows for interior viewing

\* The next phase is to make the furniture that will fill the space some more. Gazing at the front windows again.....I see that I not only solved my biggest dilemma thus far, but I put all of the windows back into sync with one another.....now they are all basically the same size. This is so cool! I can't wait to begin the furniture assembly.....I have another idea for the back side of the pilot house.

# The Little Extras:



- \* “Here’s where this build log turns into a fashion show.”
- \* Custom furniture and brass!



- \* Made white decal tape to make a perfect water line.



# Starting the Masts:



- \* Fitting me new wheelhouse custom roof on adding brass rails. Set the mizzen mast.



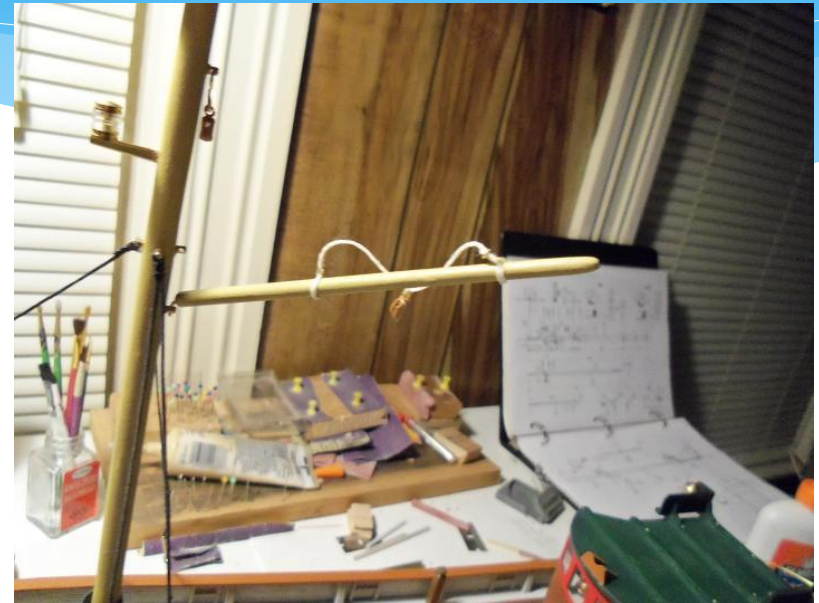
- \* After fitting the masts in place, you could definitely see the difference...it had come a long way.



# Moving right along...:



- \* Adding the decal made it look a whole lot more finished.



- \* The lower boom was then added to the build.....cemented in place. The blocks had been added to the boom beforehand. These blocks had to have eye bolts installed on the other end, to be the starting point of the rigging that they would play a part in.

# Updated Pilot House & Winch



- \* Lots of time spent customizing the pilot house. Made working doors, large view in windows... I am really pleased with it.



- \* I decided that the winch should be set-up next. It had to have cables wound into the spools and finally, cemented in place on the deck.

# Sails (I guess they have to be done!):



\* It was time to do the sails..... I had put them off long enough. I wanted to do them on my wife's sewing machine. I approached her about it and she told me that she would do them. This was a couple of weeks ago..... I could wait no longer. I got out the sewing machine and asked her to set it up for me



\* Soon, both of the sails were sewn. Now the task was to trim all the loose thread from the edges, and clean up the lines. After this was finished, the backs of the sail were painted with diluted white glue, in order to keep the edges from fraying and to secure the stitching.



# Installing the Sails:



- \* After the sails were completed, I couldn't wait to get them on! I had looked up and found this really cool site about rigging sails on small sailing ships, and I compared it to the large blueprint that came with the kit. It showed me how to rig the mast hoops, giving me a few pointers. I started with the main sail, rigging it at the upper boom and then at the end of the lower boom



- \* One by one they were threaded through the sail and the mast hoop eyelet, until they were all strung. In this last picture, you will see another line that starts {tied} to the top corner of the sail, goes through a block {that I had to add}, and goes through all of the mast hoop eyelets, and is tied off at the cleat near the base of the mast

# Finishing Touches:



- \* The finish work continued on the Mary Ann. This is to be the last build log, and I can honestly say...this has been a fun ship to build. Yes, I made some changes.....a couple quite drastic, but it has produced a very nice looking ship.

- \* Lots of add-ons, all custom built. See better detail on Denis' building log page  
<http://maryanndrydock.wordpress.com>



# Finished Photo's:

**Much more detail can be found on the building log online at:**



<http://maryanndrydock.wordpress.com>